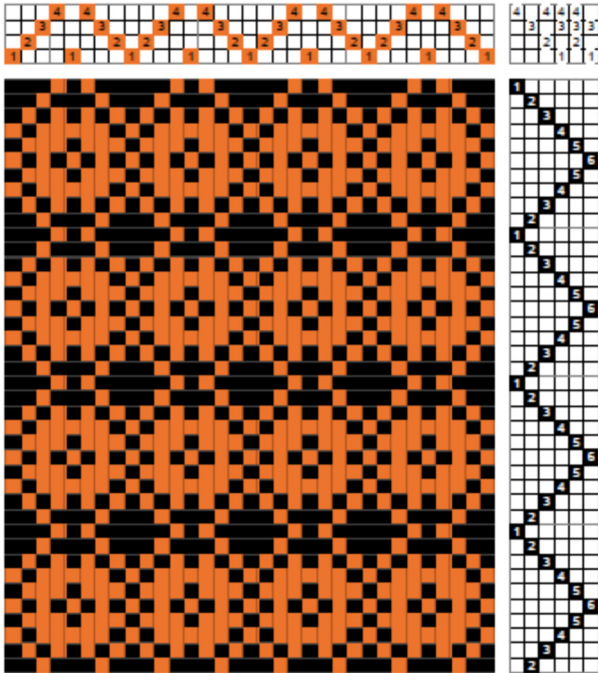


Popcorn Treadling Method

A treadling method (see entry) is a sequence of treadling directions that can be applied to a number of threadings. The popcorn treadling method is similar to waffle weave, which is not a

weave, but itself a treadling method. As in waffle weave, the popcorn treadling method has long floats. The name is derived from popcorn which the formed cells resemble.

Below is an example of popcorn applied to a bird's eye twill threading. The front and back



of the fabric can be a bit different, so both are shown with their respective drawdowns.

